

# ROACH BRIDGE TISSUES

SPECIALIST PRINTERS AND  
CONVERTERS OF WRAPPING TISSUE

UNIT 1, ROACH BRIDGE MILL,  
SAMLESBURY, PR5 0UB

01254854612

[WWW.ROACHBRIDGETISSUES.COM](http://WWW.ROACHBRIDGETISSUES.COM)

[CAMILLA@ROACHBRIDGE.COM](mailto:CAMILLA@ROACHBRIDGE.COM)



*Roach Bridge Tissues*

Specialist printers & converters of fine quality tissues



## OUR SUSTAINABILITY JOURNEY

SINCE WE STARTED THE COMPANY  
IN 1999, WE HAVE MADE IT OUR  
AIM TO PRODUCE OUR TISSUE  
PAPER IN THE MOST SUSTAINABLE  
WAY WE CAN – THINKING ABOUT  
THE EFFECTS OF PRODUCTION ON  
THE ENVIRONMENT AND ON  
OURSELVES

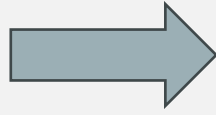


TRADITIONALLY PAPER MILLS WERE BUILT NEXT TO RIVERS AS WATER IS A VERY IMPORTANT PART OF THE PAPER MAKING PROCESS, AND WATER WHEELS WERE ALSO USED TO GENERATE POWER.

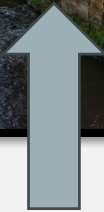
WE BUILT A NEW HYDRO ELECTRIC PLANT, ALMOST EXACTLY WHERE IT HAD BEEN IN THE 1800'S, AND THIS NOW PRODUCES ENOUGH ELECTRICITY TO RUN ALL THE MACHINERY IN OUR FACTORY, AND IT FEEDS SOME BACK TO THE NATIONAL GRID AS WELL.



THE INTAKE – WATER IS DIVERTED FROM THE MAIN RIVER, THROUGH THE TURBINE, AND THEN BACK INTO THE RIVER ABOUT 100 METRES DOWNSTREAM



THE TURBINE – MOST OF THE MECHANICS OF THE TURBINE ARE UNDERGROUND – VERY BASICALLY IT IS LIKE A PLUG HOLE WITH A PROPELLOR WHICH TURNS AS THE WATER GOES DOWN THROUGH IT - A LOT MORE EFFICIENT AT POWER GENERATION THAN A WATER WHEEL!



THE MILL BUILDING AND WEIR – FROM THE OUTSIDE YOU CAN'T TELL THAT WE ARE 'USING' THE WATER TO PRODUCE ELECTRICITY

THE TRASH RACKS – THESE MAKE SURE THAT NO DEBRIS (OR FISH!) FLOATING DOWN THE RIVER CAUSES DAMAGE TO THE MACHINE



WE BUY HUGE REELS OF TISSUE PAPER  
FROM MANUFACTURERS IN EUROPE  
WHICH WE THEN PRINT AND SHEET TO  
SELL IN THE UK (MAINLY)

ALL THE PAPER WE BUY IS EITHER FSC  
CERTIFIED (FSC PAPER IS GUARANTEED  
TO COME FROM MANAGED FORESTS)  
OR MADE FROM 100% RECYCLED  
MATERIAL – POST INDUSTRIAL WASTE



All products on this document are:  
100% PEFC certified  
N° Chain of custody WOOD.BE-COC-001546  
FSC recycled 100%  
N° Chain of custody WB-COC-001577



WE USE WATER BASED INKS – NOT SOLVENT BASED, SO WE DON'T HAVE TO DEAL WITH CHEMICALS AND THE PAPER IS STILL RECYCLABLE ONCE IT IS PRINTED

THE PAPER WRAPPERS WE USE ARE ALSO MADE FROM 100% RECYCLED MATERIAL

THE SEALING TAPE IS MADE OF PAPER

WE USE REUSED/RECYCLED PALLETES TO SEND OUT PRODUCTS TO OUR CUSTOMERS



AT THE END OF EACH PRINTING JOB, WE HAVE TO CLEAN DOWN THE PRINT MACHINES.  
AS WE USE WATER BASED INKS, WE CAN DO THIS WITH WATER.  
ALL THE WASTE WATER AND INK IS GATHERED INTO A LARGE TANK AND THEN FILTERED TO  
REMOVE THE INK PARTICLES - SO ALL WE PUT DOWN THE DRAIN IS CLEAN WATER

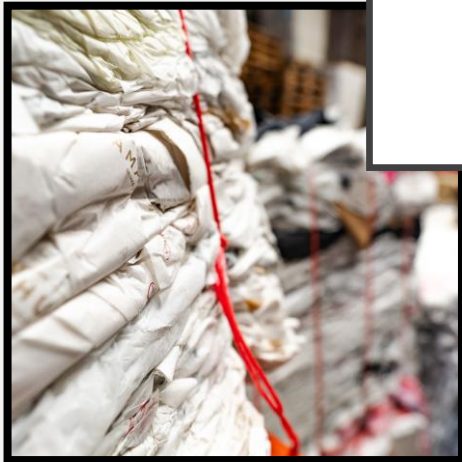




WITH ANY MANUFACTURING PROCESS THERE IS ALWAYS SOME WASTE.  
THE MAJORITY OF OUR WASTE CONSISTS OF PAPER, INK BUCKETS AND SOME PLASTIC WRAPPERS, PLUS USED PAPER FROM THE OFFICE.

WE HAVE BAILING MACHINES AND WE SEPARATE ALL THE WASTE INTO DIFFERENT BATCHES AND THEN BAIL IT UP, READY TO TAKE TO THE PAPER RECYCLERS IN DARWEN. THEY ALSO RECYCLE THE BALES OF PLASTIC.

THE METAL INK BUCKETS CAN EASILY BE RECYCLED TOO.





PART OF BEING SUSTAINABLE IS CREATING  
A GOOD WORKING ENVIRONMENT...  
OUR BUILDING HAS MORE NATURAL  
LIGHT THAN MOST, AND WE HAVE A  
GREAT VIEW TO LOOK OUT ON -  
OCCASIONALLY WE EVEN SEE DEER!

WE CHANGED ALL THE LIGHTS IN THE  
FACTORY TO LEDs A WHILE AGO WHICH  
ARE MUCH BETTER FOR THE  
ENVIRONMENT

WE HAVE A SPECIALLY DESIGNED HEATING  
SYSTEM, WHICH HEATS JUST THE AREAS  
WE WORK IN, RATHER THAN THE WHOLE  
BUILDING, WHICH IS MORE FUEL  
EFFICIENT AND WE LOSE LESS HEAT INTO  
THE ENVIRONMENT

